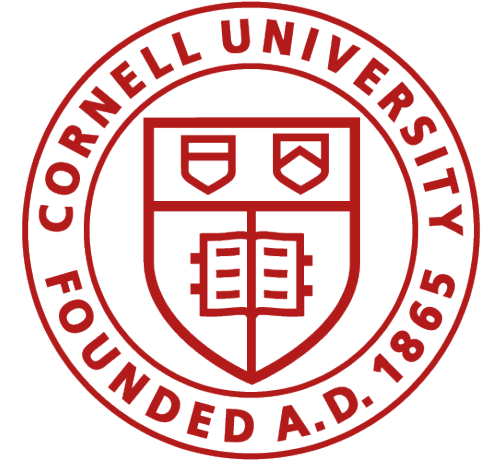


“

The Assemblies at Cornell, together with the Faculty Senate, are the expression of the university's commitment to shared governance and constituent representation.

What does this even mean?!

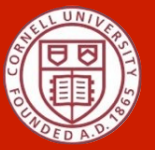


**Cornell University
Office of the Assemblies**

The assemblies are a part of shared governance at Cornell.

1. Participation in University decision-making by students, faculty and staff in areas of direct and joint concern to them;
2. A forum for discussion of campus issues;
3. Supervision of the campus judicial system.

HISTORY OF SHARED GOVERNANCE

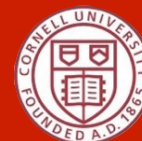


1955

- The Board of Trustees transferred the responsibility for non-academic matters to the President of the University.
- Prior to this time, it **had been the responsibility of the faculty** to make decisions regarding academic as well as **non-academic policies and procedures.**



HISTORY OF THE ASSEMBLIES



- Roots in campus events of 1969
- Major overhauls in 1977 and 1981
- EA, SA created in 1981
- GPSA created in 1993
- More prominence for constituent assemblies
- More focused role for the UA



THE CONSTITUENT-ELECTED TRUSTEES

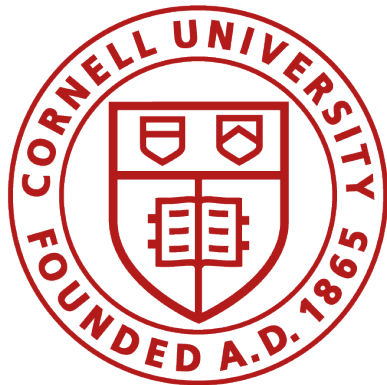
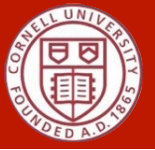


Full voting members of the 64-member Board of Trustees

- Faculty and Staff are elected for four-year terms
- Students (alternating between undergraduate and a **graduate or professional student**) are elected to serve two-year terms
- Elections for a new Student-Elected Trustee will take place this fall.



THE CORNELL COMMUNITY



8,392
Constituents

7,932
Constituents

16,067
Constituents

1,679
Constituents

33,071
Constituents

Employee Assembly

30 Staff Members

Grad & Professional Student Assembly

18 Graduate & Prof Student Members

Student Assembly

28 Undergraduate Student Members

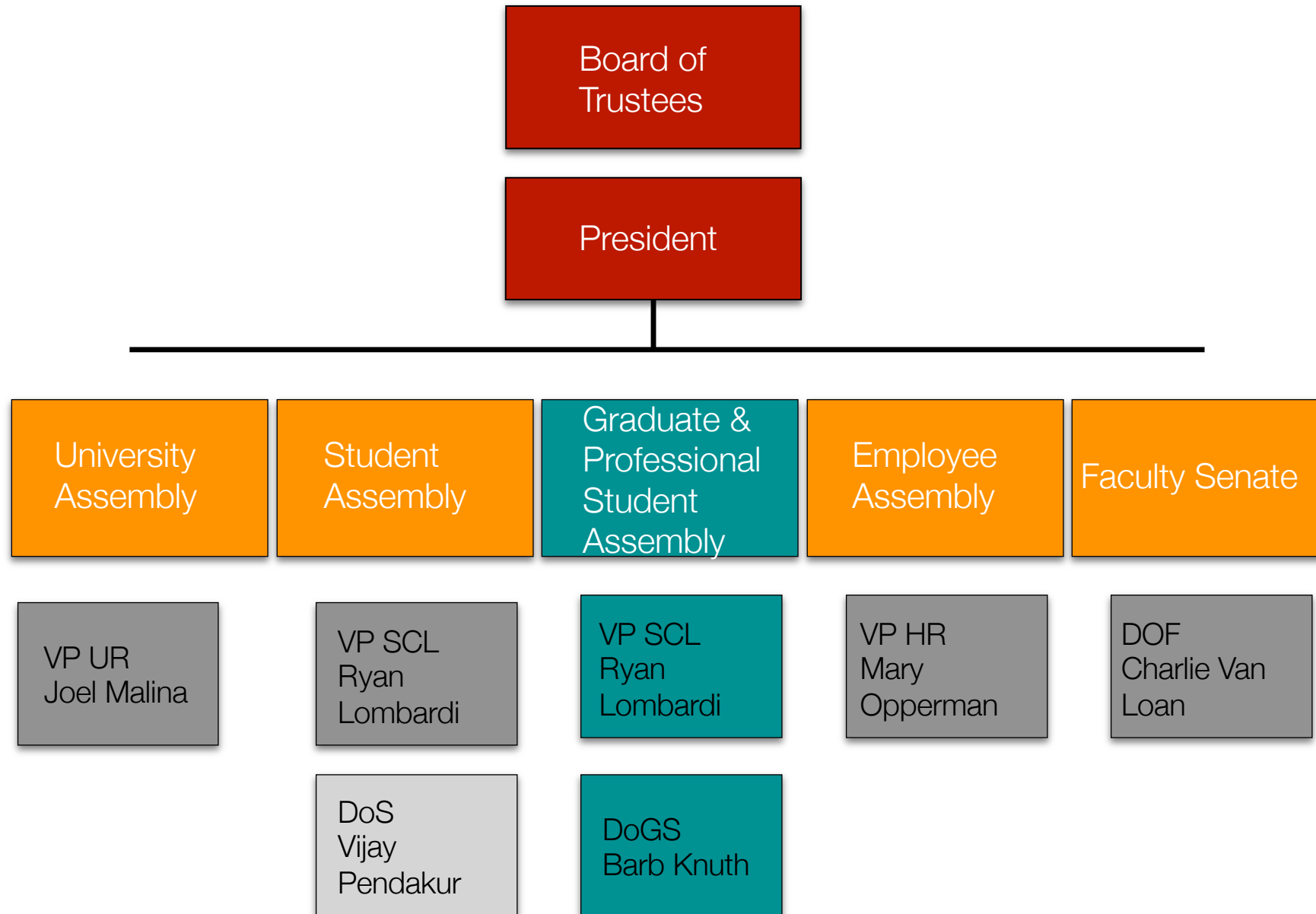
Faculty Senate

108 Faculty Senators

University Assembly

5 staff, 5 grad/professional students,
5 undergraduates, 5 faculty

ADMINISTRATIVE STRUCTURE



THE OFFICE OF THE ASSEMBLIES



32,766 Constituents

919 Roles in the Assemblies

775 Committee members

54 Committees

4 Assemblies

WHAT WE DO FOR THE GPSA



The Office of the Assemblies:

- Provides staff for regular assembly meetings with a student clerk (**Corel!**) who:
 - Prepares documents and meeting packets for the assembly meetings
 - prepares minutes of meetings,
 - prepares audio recordings of meetings, and,
 - posts meeting materials on the assembly's website;
- assists the assembly in reservation of spaces and other resources for regular meetings;
- maintains websites for the assembly and its standing committees, including documents produced by the assembly and its committees, rosters of membership, information about the composition of the committees and how to get involved, and applications for membership



Legislative Authority

- Originates by **delegation from the President and Board** of Trustees.
- Authority is **delegated, not transferred**
- **Assemblies have advisory** authority, subject to approval by President.
- **Assemblies make recommendations** which are reviewed by the President in consultation with senior staff.



Fundamental Authorities

- All Assemblies have a mandate to represent constituent interests and bring issues of concern to university leadership
- Legislative authority to recommend changes to university policies that affect constituents, subject to approval by the President



Specifically:

GRADUATE AND PROFESSIONAL STUDENT ASSEMBLY (GPSA)

- Graduate School
- Non-academic Policies

Student Assembly (SA):

- Campus Life
- Student & Academic Services

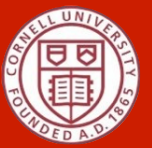
University Assembly (UA):

- Campus Code of Conduct
- University Hearing & Review Boards
- Transportation
- Planning

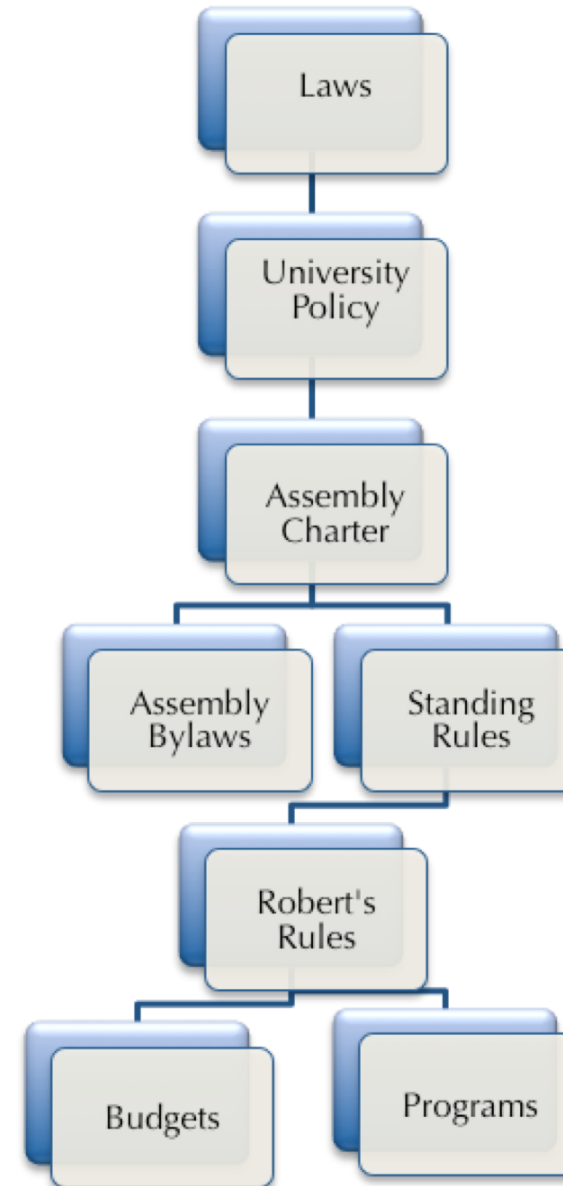
Employee Assembly (EA)

- Human Resources
- Personnel Policy

RULES & GOVERNING DOCUMENTS



- Assembly **Charter**: permanent, basic rules
- Assembly **Bylaws**: permanent, detailed rules
- **Standing rules**: year-to-year procedures
- **Program rules** (GPSA Finance Commission)



Going Through the Motions

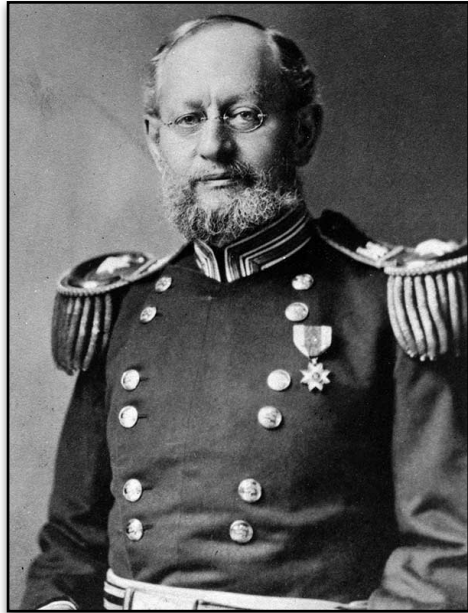
or

Who is **Robert**, Anyway?!

RULES & GOVERNING DOCUMENTS

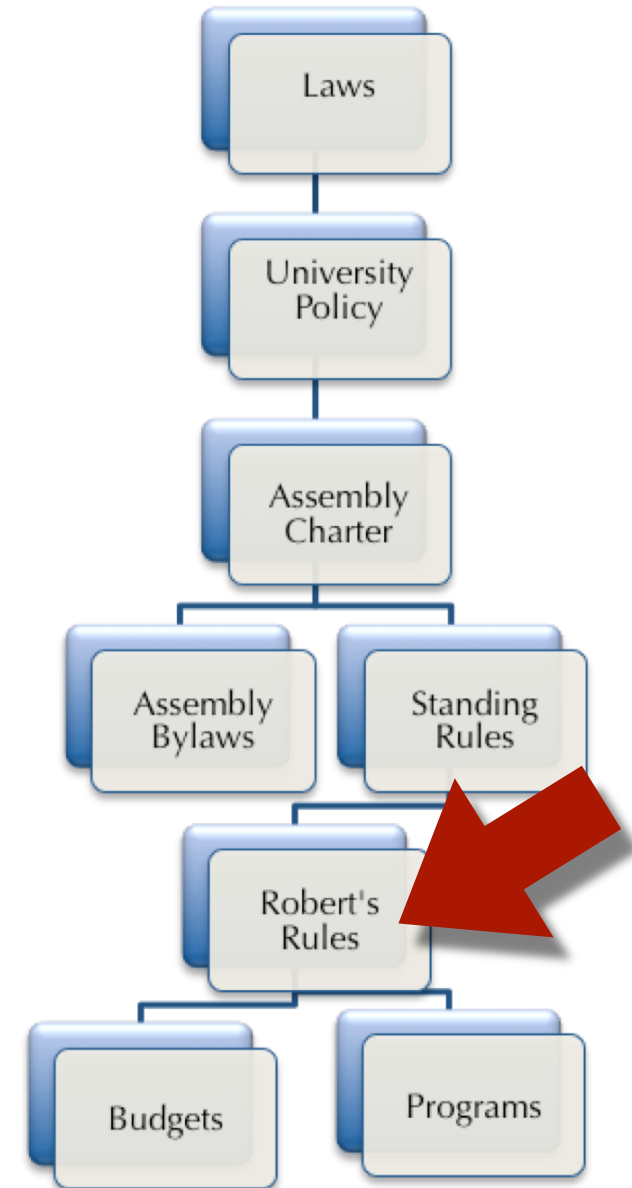


Robert's Rules of Order



Original edition published in 1876 by US Army Brigadier General Henry Martyn Robert after a bad experience leading a church meeting.

We do not want to waste time with excessive formality, but some of our issues may be contentious and we need to ensure everyone gets their fair opportunity to speak.



MOTIONS AND RESOLUTIONS

Defining a Motion

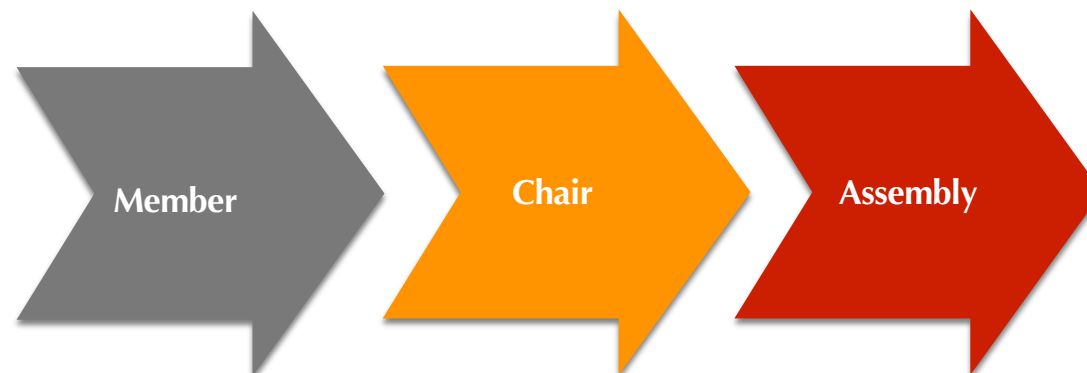
- A formal proposal for consideration and action
- Only one subject can be considered at a time
- No main motion can be made while another motion is before the assembly.

To make a motion, say, “I move that...”

Seconding motions

Debating Motions

Voting



When Debating Your Motions

- Listen to the other side
- Focus on the issues, not personalities
- Avoid questioning motives
- Be polite!

Voting

- Roll Call Vote (most common)
 - Three responses in which a member may vote:
 - “For” (in favor of the motion or legislation)
 - “Against” (opposed to the motion or legislation)
 - “Abstain” (neither for nor against)
- Abstention
 - Members may abstain only if there is a distinct conflict of interest

Voting

- Unanimous Consent

- For certain motions, the chair may simply ask the assembly if there is any objection
- If no member objects, the chair declares the action has been agreed to
- If even one member objects, the chair must then state the question and follow the complete voting guidelines.

What's on Your Mind?

(things to do before writing a resolution!)

1. **Develop** the initiative/topic that you want to address
2. **Search** for a legislative history surrounding the issue
3. **Solicit** feedback from assembly members and your constituents
(Remember, you represent other people!)

4. **Engage Stakeholders for information**

- Administrators
- Staff colleagues
- Assembly Committees
- Community

Quick Checklist

- ✓ Checked for legislative history
- ✓ Checked with peer institutions
- ✓ Presented at all relevant committees
- ✓ Solicited feedback from relevant university offices
- ✓ Have support from as many members as possible
- ✓ Issue is still unresolved

By this point, you should have a pretty good idea of how the debate and vote will go before your resolution comes to the floor.



THANK YOU!

QUESTIONS?